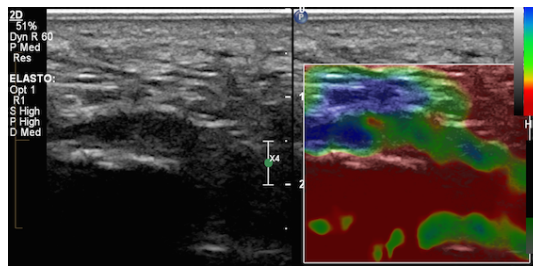

A Patient's Guide to **Plantar Fasciitis**

Iain JS Duncan



Iain is a specialist in musculoskeletal imaging and the diagnosis of musculoskeletal pain. This information is provided with the hope that you can better understand and manage your condition. The information is not specific to your condition and is meant as a general guide only. Iain has added some information at the end of each booklet which might help add some context in regard to assessment and management from a local perspective.

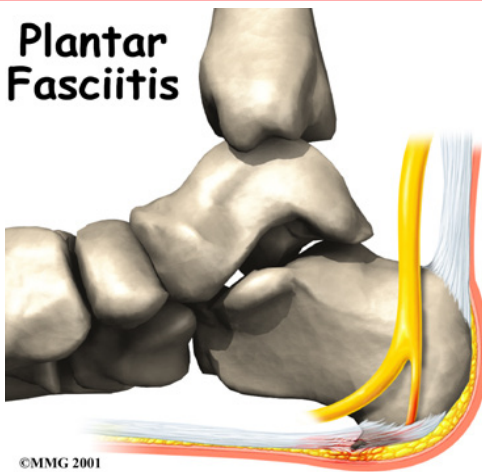
Iain JS Duncan

DR IAIN DUNCAN

info@driainduncan.com.au

All materials within these pages are the sole property of Medical Multimedia Group, LLC and are used herein by permission. eOrthopod is a registered trademark of Medical Multimedia Group, LLC.

Plantar Fasciitis



Introduction

Plantar fasciitis is a painful condition affecting the bottom of the foot. It is a common cause of heel pain and is sometimes called a *heel spur*. Plantar fasciitis is the correct term to use when there is active inflammation. *Plantar fasciosis* is more accurate when there is no inflammation but chronic degeneration instead. Acute plantar fasciitis is defined as inflammation of the origin of the plantar fascia and fascial structures around the area. Plantar fasciitis or fasciosis is usually just on one side. In about 30 per cent of all cases, both feet are affected.

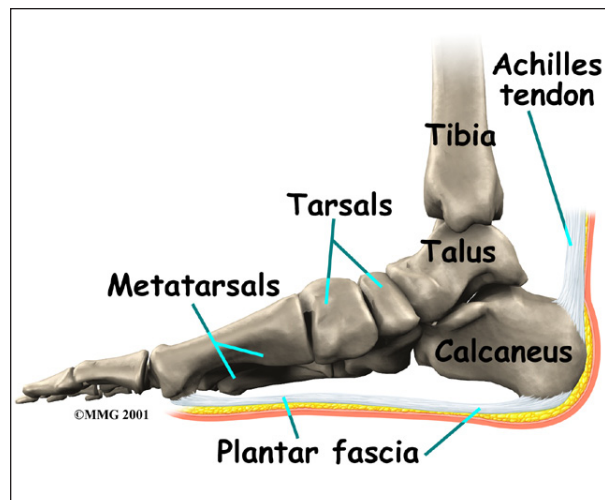
This guide will help you understand

- how plantar fasciitis develops
- how the condition causes problems
- what can be done for your pain

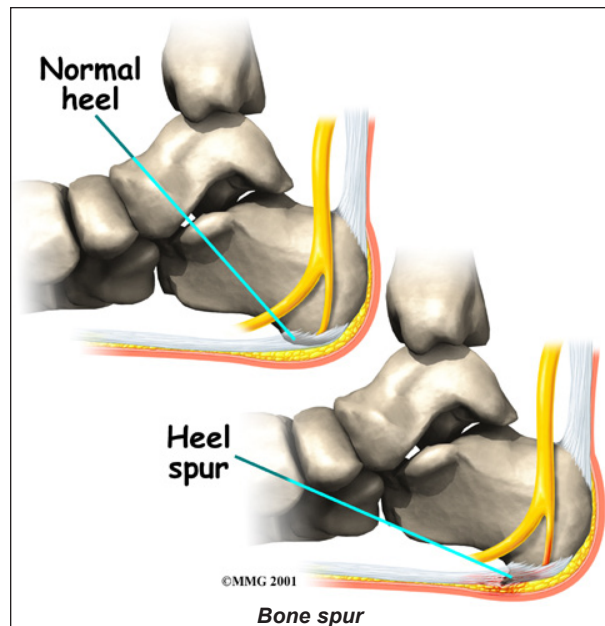
Anatomy

Where is the plantar fascia, and what does it do?

The plantar fascia (also known as the *plantar aponeurosis*) is a thick band of connective tissue. It runs from the front of the heel bone (calcaneus) to the ball of the foot. This dense strip of tissue helps support the arch of the foot by acting something like the string on an archer's bow. It is the source of the painful condition plantar fasciitis.



The plantar fascia is made up of collagen fibers oriented in a lengthwise direction from toes to heel (or heel to toes). There are three separate parts: the *medial component* (closest to the big toe), the central component, and the *lateral component* (on the little toe side). The central portion is the largest and most prominent.



Both the plantar fascia and the Achilles' tendon attach to the calcaneus. The connections are separate in the adult foot. Although they function separately, there is an indirect relationship. If the toes are pulled back toward the face, the plantar fascia tightens up. This position is very painful for someone

with plantar fasciitis. Force generated in the Achilles' tendon increases the strain on the plantar fascia. This is called the *windlass mechanism*. Later, we'll discuss how this mechanism is used to treat plantar fasciitis with stretching and night splints.

Causes

How does plantar fasciitis develop?

Plantar fasciitis can come from a number of underlying causes. Finding the precise reason for the heel pain is sometimes difficult.

As you can imagine, when the foot is on the ground a tremendous amount of force (the full weight of the body) is concentrated on the plantar fascia. This force stretches the plantar fascia as the arch of the foot tries to flatten from the weight of your body. This is just how the string on a bow is stretched by the force of the bow trying to straighten. This leads to stress on the plantar fascia where it attaches to the heel bone. Small tears of the fascia can result. These tears are normally repaired by the body.

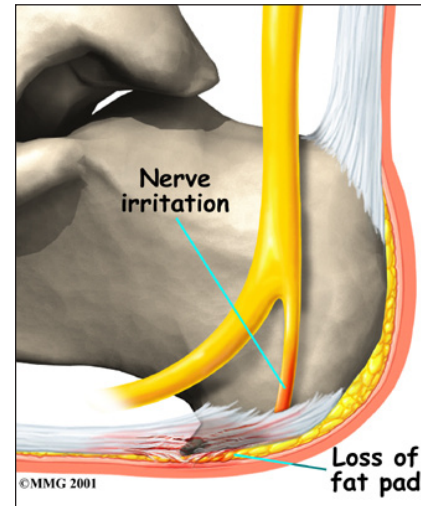


As this process of injury and repair repeats itself over and over again, a *bone spur* (a pointed outgrowth of the bone) sometimes forms as the body tries to firmly attach the fascia to the heel bone. This appears on an X-ray of the foot as a heel spur. Bone spurs occur along with plantar fasciitis but they are not the cause of the problem.

As we age, the very important *fat pad* that makes up the fleshy portion of the heel becomes thinner and *degenerates* (starts to

break down). This can lead to inadequate padding on the heel.

With less of a protective pad on the heel, there is a reduced amount of shock absorption. These are additional factors that might lead to plantar fasciitis.



Some physicians feel that the small nerves that travel under the plantar fascia on their way to the forefoot become irritated and may contribute to the pain. But some studies have been able to show that pain from compression of the nerve is different from plantar fasciitis pain. In many cases, the actual source of the painful heel may not be defined clearly.

Other factors that may contribute to the development of plantar fasciitis include obesity, trauma, weak plantar flexor muscles, excessive foot *pronation* (flat foot) or other alignment problems in the foot and/or ankle, and poor footwear.

Symptoms

What does plantar fasciitis feel like?

The symptoms of plantar fasciitis include pain along the inside edge of the heel near the arch of the foot. The pain is worse when weight is placed on the foot especially after a long period of rest or inactivity. This is usually most pronounced in the morning when the foot is first placed on the floor. This symptom called *first-step pain* is typical of plantar fasciitis.

Prolonged standing can also increase the painful symptoms. It may feel better after

activity but most patients report increased pain by the end of the day. Pressing on this part of the heel causes tenderness. Pulling the toes back toward the face can be very painful.

Diagnosis

How do doctors diagnose the condition?

The diagnosis of plantar fasciitis is generally made during the history and physical examination. There are several conditions that can cause heel pain, and plantar fasciitis must be distinguished from these conditions. Pain can be referred to the heel and foot from other areas of the body such as the low back, hip, knee, and/or ankle. Special tests to challenge these areas are performed to help confirm the problem is truly coming from the plantar fascia.

An X-ray may be ordered to rule out a stress fracture of the heel bone and to see if a bone spur is present that is large enough to cause problems. Other helpful imaging studies include bone scans, MRI, and ultrasound. Ultrasonographic exam may be favored as it is quick, less expensive, and does not expose you to radiation.

Laboratory investigation may be necessary in some cases to rule out a *systemic illness* causing the heel pain, such as rheumatoid arthritis, Reiter's syndrome, or ankylosing spondylitis. These are diseases that affect the entire body but may show up at first as pain in the heel.

Treatment

What can be done for my pain?

Nonsurgical Treatment

Most patients get better with the help of nonsurgical treatments. *Stretches* for the calf muscles on the back of the lower leg take tension off the plantar fascia.

A night splint can be worn while you sleep. The night splint keeps your foot from bending downward. It places a mild stretch on the calf muscles and the plantar fascia. Some people seem to get better faster when using a night splint. They report having less heel pain when placing the sore foot on the ground in the morning.

There have been a few studies that reported no significant benefit from adding night splinting to a program of antiinflammatory meds and stretching. Other studies report the benefits of short-term casting to unload the heel, immobilize the plantar fascia, and reduce repetitive microtrauma.

Supporting the arch with a well-fitted arch support, or *orthotic*, may also help reduce pressure on the plantar fascia. Placing a special type of insert into the shoe, called a *heel cup*, can reduce the pressure on the sore area. Wearing a silicone heel pad adds cushion to a heel that has lost some of the fat pad through degeneration.

Shock wave therapy is a newer form of nonsurgical treatment. It uses a machine to generate shock wave pulses to the sore area. Patients generally receive the treatment once each week for up to three weeks. It is not known exactly why it works for plantar fasciitis. It's possible that the shock waves disrupt the plantar fascial tissue enough to start a healing response. The resulting release of local growth factors and stem cells causes an increase in blood flow to the area. Recent studies indicate that this form of treatment can help ease pain, while improving range of motion and function.

Clinical trials are underway investigating the use of *radiofrequency* to treat plantar fasciitis. It is a simple, noninvasive form of treatment. It allows for rapid recovery and pain relief within seven to 10 days. The radio waves promote *angiogenesis* (formation of new blood vessels) in the

area. Once again, increasing blood flow to the damaged tissue encourages a healing response.

Anti-inflammatory medications are sometimes used to decrease the inflammation in the fascia and reduce your pain. Studies show that just as many people get better with antiinflammatories as those who don't have any improvement. Since these medications are rarely used alone, it's difficult to judge their true effectiveness.

A *cortisone* injection into the area of the fascia may be used but has not been proven effective. Studies show better results when ultrasound is used to improve the accuracy of needle placement. Cortisone should be used sparingly since it may cause rupture of the plantar fascia and fat pad degeneration and atrophy, making the problem worse.

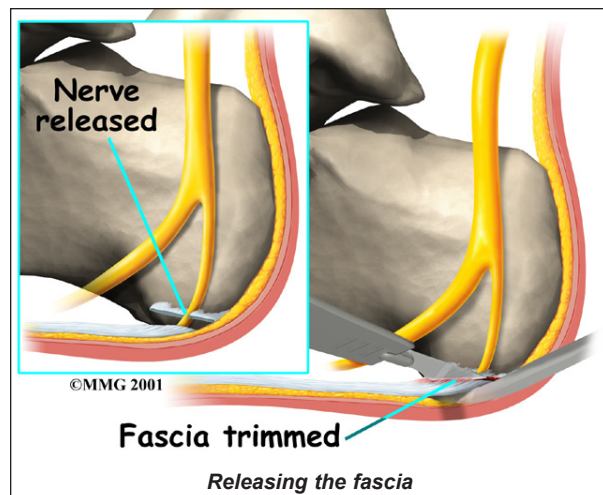
Botulinum toxin A otherwise known as BOTOX has been used to treat plantar fasciitis. The chemical is injected into the area and causes paralysis of the muscles. BOTOX has direct *analgesic* (pain relieving) and antiinflammatory effects. In studies so far, there haven't been any side effects of this treatment.

Surgery

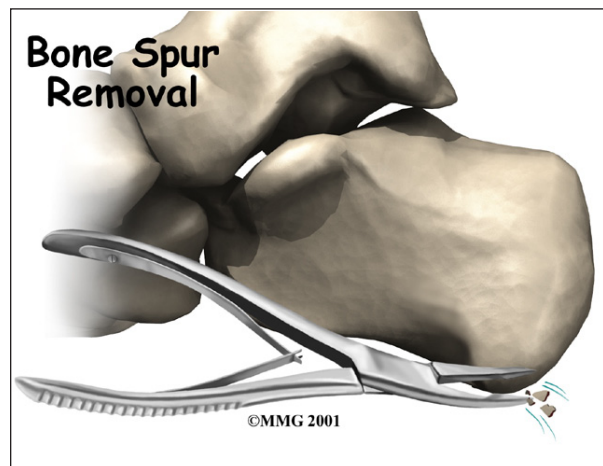
Surgery is a last resort in the treatment of heel pain. Physicians have developed many procedures in the last 100 years to try to cure heel pain. Most procedures that are commonly used today focus on several areas:

- remove the bone spur (if one is present)
- release the plantar fascia (*plantar fasciotomy*)
- release pressure on the small nerves in the area

Usually the procedure is done through a small incision on the inside edge of the foot, although some surgeons now perform this type of surgery using an *endoscope*. An endoscope is a tiny TV camera that can be inserted into a joint or under the skin to allow the surgeon to



see the structures involved in the surgery. By using the endoscope, a surgeon can complete the surgery with a smaller incision and presumably less damage to normal tissues. It is unclear whether an endoscopic procedure for this condition is better than the traditional small incision.



Surgery usually involves identifying the area where the plantar fascia attaches to the heel and **releasing the fascia** partially from the bone. If a **small spur is present this is removed**. The small nerves that travel under the plantar fascia are identified and released from anything that seems to be causing pressure on the nerves. This surgery can usually be done on an outpatient basis, meaning you can leave the hospital the same day.

Rehabilitation

What should I expect following treatment?

Nonsurgical Rehabilitation

Nonsurgical management of plantar fasciitis is successful in 90 per cent of all cases. Patients with plantar fasciitis are commonly prescribed physical therapy. Therapists design exercises to improve flexibility in the calf muscles, Achilles' tendon, and the plantar fascia.

Treatments directed to the painful area help control pain and swelling. Examples include ultrasound, ice packs, taping, and soft-tissue massage. Therapy sessions sometimes include *iontophoresis*, which uses a mild electrical current to push anti-inflammatory medicine to the sore area.

A customized foot orthotic may be designed to support the arch of the foot and to help cushion the heel. Or your therapist may recommend you use a heel cup. Healing is fostered by off-loading the plantar fascia and allowing it time to heal without daily (repeated) microtrauma. The pressure of the cup or orthotic against the skin may also interrupt sensory input and pain messages going to the brain.

Ideas are offered for you to use at home, such as doing your stretches for the calf muscles and the plantar fascia. You may also be fit with a night splint to wear while you sleep. As mentioned earlier, the night splint is designed to put a gentle stretch on the calf muscles and plantar fascia as you sleep.

Many times it takes a combination of different approaches to get the best results. There isn't a one-size-fits-all plan. Some patients do best with a combination of heel padding, medications, and stretching. If this doesn't provide relief from symptoms within four to six weeks, then physical therapy and orthotics may be added. There is some evidence that an orthotic

in the first few weeks after symptoms appear followed by stretching is an effective approach.

Finding the right combination for you may take some time. Don't be discouraged if it takes a few weeks to a few months to find the right fit for you. Most of the time, the condition is self-limiting. This means it doesn't last forever but does get better with a little time and attention. But in some cases, it can take up to a full year or more for the problem to be resolved.

After Surgery

It will take several weeks before the tissues are well healed. The incision is protected with a bandage or dressing for about one week after surgery. You will probably use crutches briefly, and a physical therapist may be consulted to help you learn to use your crutches.

The stitches are generally removed in 10 to 14 days. However, if your surgeon used sutures that dissolve, you won't need to have the stitches taken out. You should be released to full activity in about six weeks.

Surgical release of the plantar fascia decreases stiffness in the arch. But it can lead to collapse of the *longitudinal* (lengthwise) arch of the foot. Releasing the fascia alters the biomechanics of the foot and may decrease stability of the foot arch. The result may be increased stress on the other plantar ligaments and bones. Fractures and instability have been reported in up to 40 per cent of patients who have a plantar fasciotomy.

Notes

More about the role of ultrasound and injections for this condition

About ultrasound

1. Ultrasound can resolve finer details than MRI and has a more flexible field-of-view
2. The ultrasound probe can be placed exactly where it hurts and focus on sorting out your symptoms
3. Doppler ultrasound gives important information about the blood flow
4. Elastography (used in image title page) gives information about healing and tears
5. Ultrasound is best for guiding therapeutic interventions

Perhaps one of the biggest advantages of MSK ultrasound is its use to help guide targeted injections. Ultrasound guided injections of corticosteroid and other substances directly into or around various structures can provide excellent symptomatic relief.

About Injections

Corticosteroid (cortisone) injections are part of managing the pain for this condition but do not change the long term outcome which is generally good. When the condition persists or the healing response is delayed, slowed, or abnormal then a substance known as POLIDOCANOL is sometimes recommended. This is done similar to corticosteroid injections but directly alters the healing response by causing sclerosis of small vessels and nerves. Whether this is appropriate depends on a host of factors including most importantly the ultrasound appearance in relation to the duration of symptoms.

For more about Injections for this condition see also : <http://www.driainduncan.com.au/tendinopathy/>